

CLOSING EFFORT SYSTEM



G-whiz



WIRELESSLY MEASURE CLOSURE VELOCITY AND FORCE

The **LMI G-whiz** is a wireless device designed to measure closure velocity or force, and **wirelessly** send readings to a PC or assembly information system.

The G-whiz is easily attached to the closure using a **vacuum cup**. One press of the button will start the measurement. Once the door, deck lid, lift gate, or sliding door has been closed, the **velocity or force** will be displayed on the LCD screen and a red/green LED will be displayed based on limits that are set in the G-whiz. The user can **re-test** or **wirelessly** send the measurement based on if the closure is fully latched or if a re-test is required.

Features:

- Wireless data transmission
- Simple to program and use
- Robust design
- Vacuum cup to attach to any closure regardless of material: aluminum, composite, or steel
- Easy grip handle and vacuum cup makes placement on the closure fast and secure
- Multiple outputs: Velocity (meters/second or feet/second), Force (Newtons), Work (joules)
- Comparison to limits for immediate feedback with a green/red LED and measurement displayed to the user
- Designed to measure and re-measure quickly for 100% in-line measurement
- Long life rechargeable battery lasts well over 1 shift of continuous usage
- Large LCD
- Accurate and Repeatable
- Configureable using convenient utility
- 1 year warranty

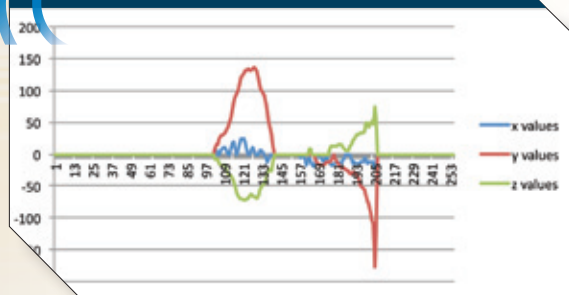
SIMPLE TO PROGRAM AND USE



EASY GRIP HANDLE AND VACUUM CUP



ACCURATE AND REPEATABLE

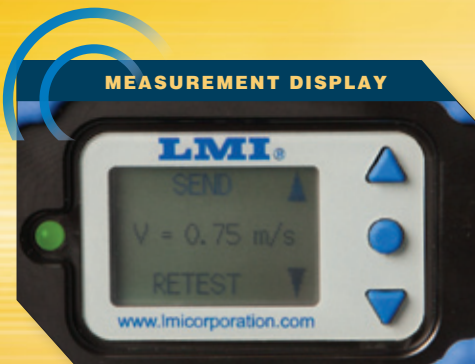


LMI[®]
Linear Measurement Instruments, Corp

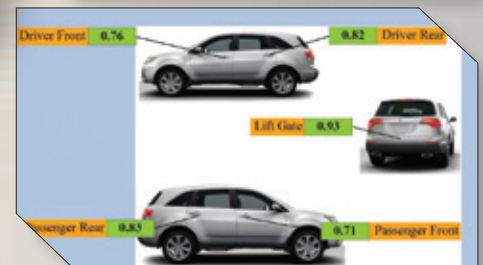
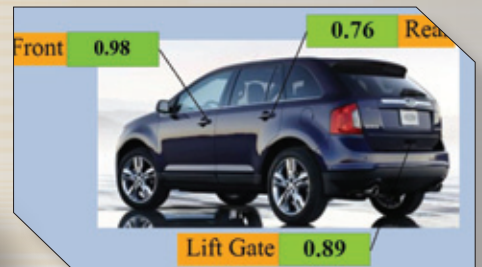




CLOSING EFFORT SYSTEM!



Interface directly to LMI's UGI data collection software



- Automatic test sequencing
- Data routines for up to five doors and ten models

LMI
Linear Measurement Instruments, Corp

101 N. Alloy Drive, Fenton, MI 48430 • Phone: 810.714.5811 Fax: 810.714.5711 • Email: sales@lmicorporation.com

